



AVAILABLE NOW

C5 75 LOGISTICS CENTER SOUTH

100 Final Mile Blvd., Unincorporated Boone Cty., KY 41094

891,314 SF Available

CBRE

LEASING AGENT



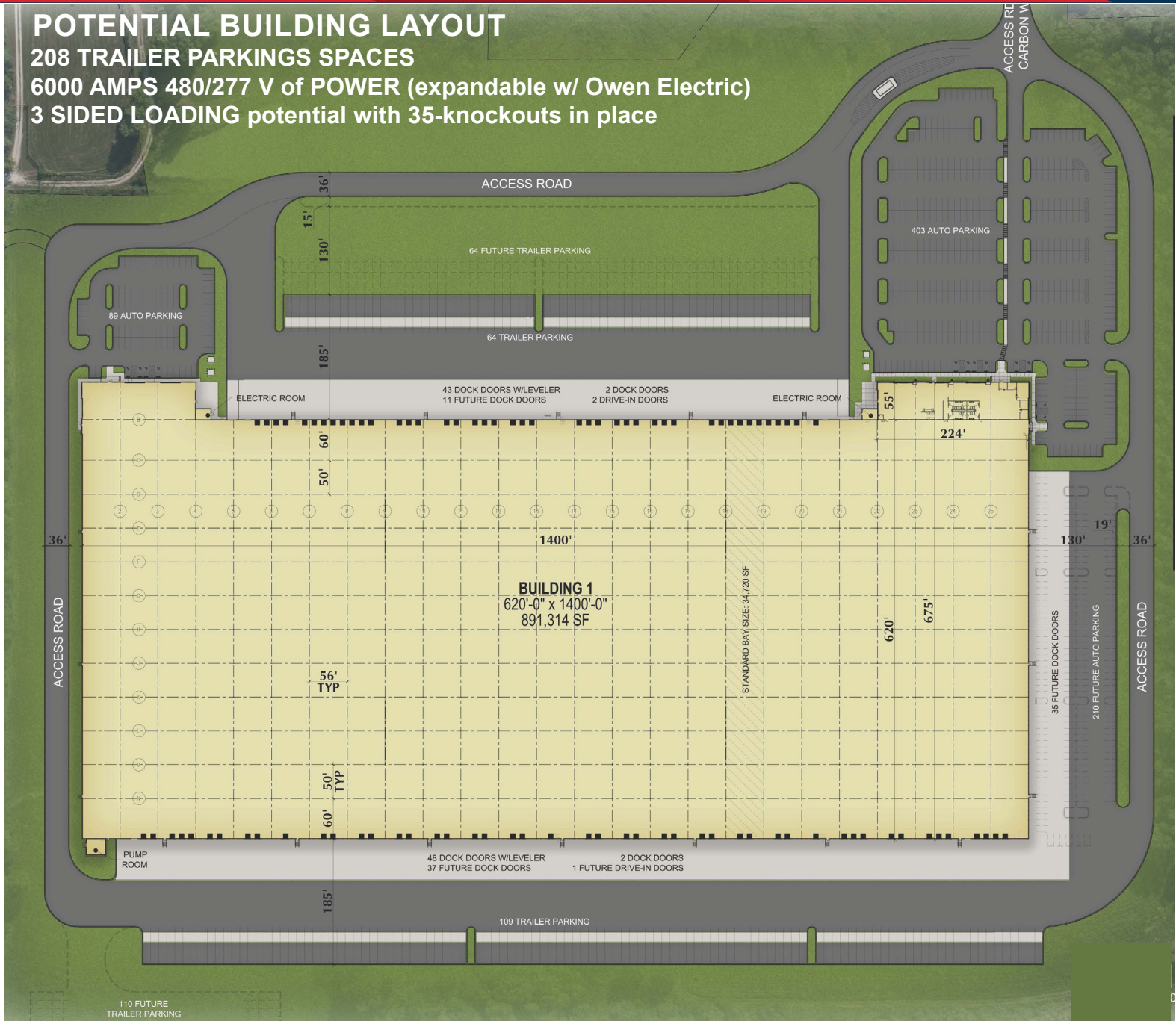
DEVELOPER

POTENTIAL BUILDING LAYOUT

208 TRAILER PARKINGS SPACES

6000 AMPS 480/277 V of POWER (expandable w/ Owen Electric)

3 SIDED LOADING potential with 35-knockouts in place



BUILDING SPECIFICATIONS

Total Building Size	891,314 SF (+/- 80.59 acres)
Office Area	12,320 SF
Dimensions	1400' wide x 620' deep (plus 2 office bump outs)
Configuration	Crossdock (3-sided loading potential)
Column Spacing	56' x 50' (typical) / 56' x 50' (staging)
Clear Height	40' minimum
Dock Doors	95 (9' x 10'); 91 fully equipped (118 knock outs for future doors)
Drive-In Doors	2 (14' x 16') (1 future drive-in ramp)
Truck Court Depth	130' / 185' total depth
Auto Parking	492 (expandable)

Trailer Parking	208 (expandable to 382)
Electrical	6,000 amps, 480/277 v, and prepped for additional 6,000 amps (expandable)
Sprinkler	ESFR (K-25)
Lighting	LED (3 aisles/bay) 30 FC std. rack aisles
Floor Slab	7" conventional concrete
Zoning	I-1
Sustainability	White TPO roof, clerestory windows and curtain wall, double vision glass in dock doors, RACK Energy Rotation Heating Units, LED lighting, insulation at 100% of exterior walls, EV charging stations and native landscaping.

C5 75 LOGISTICS CENTER SOUTH

Strategically positioned for optimal distribution, C5 75 Logistics Center South offers convenient access to multiple regional markets. The immediate access to I-71/75 via a new Double Crossover Diamond Interchange and close proximity to the Cincinnati/Northern Kentucky International Airport, Prime Air and DHL Super Hub translates to reduced transportation costs, faster delivery times and enhanced supply chain efficiency. Benefit from a robust labor pool and a business-friendly environment, all within the thriving logistics landscape of Northern Kentucky.





DISTANCE IN MILES

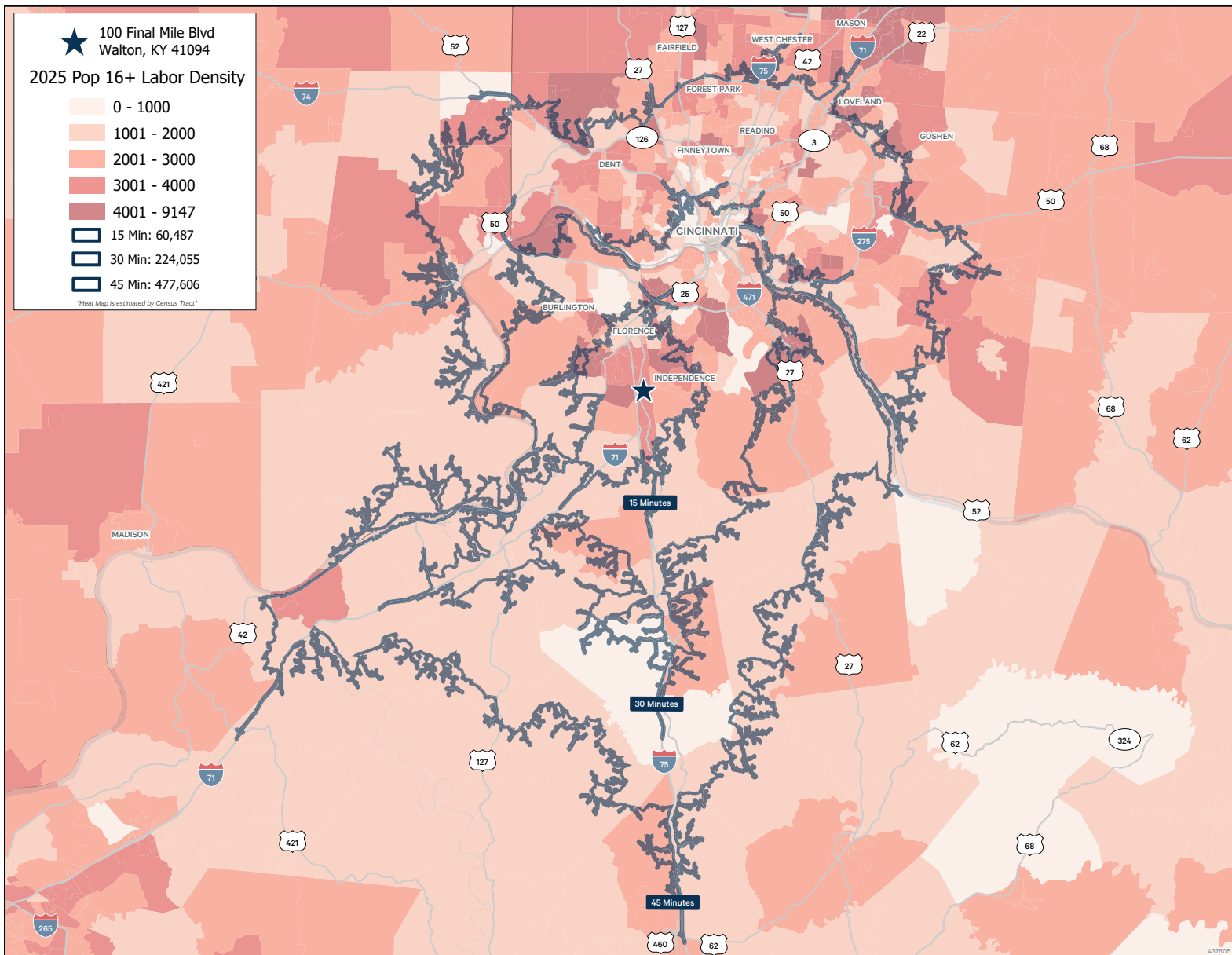
I-75 / I-71	1.7
Cincinnati Int'l Airport / Prime Air / DHL Super Hub	16.3
Cincinnati, OH	19.2
Norfolk Southern Railroad	19.7
CSX Railroad	20.5
Lexington, KY	67
Dayton, OH	72.3
Louisville, KY	84.3
Columbus, OH	126
Indianapolis, IN	130

Benefits of a Double Cross Over Diamond Exchange

Safety — DCDs reduce wrong-way entries to ramps, the number of times opposing traffic crosses paths and the potential number of crash points for vehicles. They also reduce speeds, so if crashes do occur then they are less severe.

Efficiency — DCDs operate with fewer traffic signal phases, which increases the volume of traffic and decreases delays. The design also provides motorists with easier access to the highway without having to cross opposing traffic.

Source: <https://transportation.ky.gov>



© 2025 CBRE, Inc. All rights reserved. This information has been obtained from sources believed reliable, but has not been verified for accuracy or completeness. Any projections, opinions, or estimates are subject to uncertainty. The information may not represent the current or future performance of the property. You and your advisors should conduct a careful, independent investigation of the property and verify all information. Any reliance on this information is solely at your own risk. CBRE and the CBRE logo are service marks of CBRE, Inc. and/or its affiliated or related companies in the United States and other countries. All other marks displayed on this document are the property of their respective owners. Photos herein are the property of their respective owners and use of these images without the express written consent of the owner is prohibited.



Anthony Armbruster

Investment Analyst

O 859.287.3705

aarmbruster@c5ip.com

CBRE

Jeremy Kraus

Executive Vice President

O 513.369.1307

jeremy.kraus@cbre.com

© Copyright 2025 Core5 Industrial Partners, LLC. All rights reserved.
CORE5, CORE5 INDUSTRIAL PARTNERS, and the stylized "C" CORE5 INDUSTRIAL PARTNERS design / logo are service marks of Core5 Industrial Partners, LLC for its real estate services, namely, acquisition, rental, brokerage, development, leasing, and management of industrial real estate property. These marks may not be used without express permission of Core5 Industrial Partners, LLC.